

# OPTIKA

M I C R O S C O P E S

I T A L Y

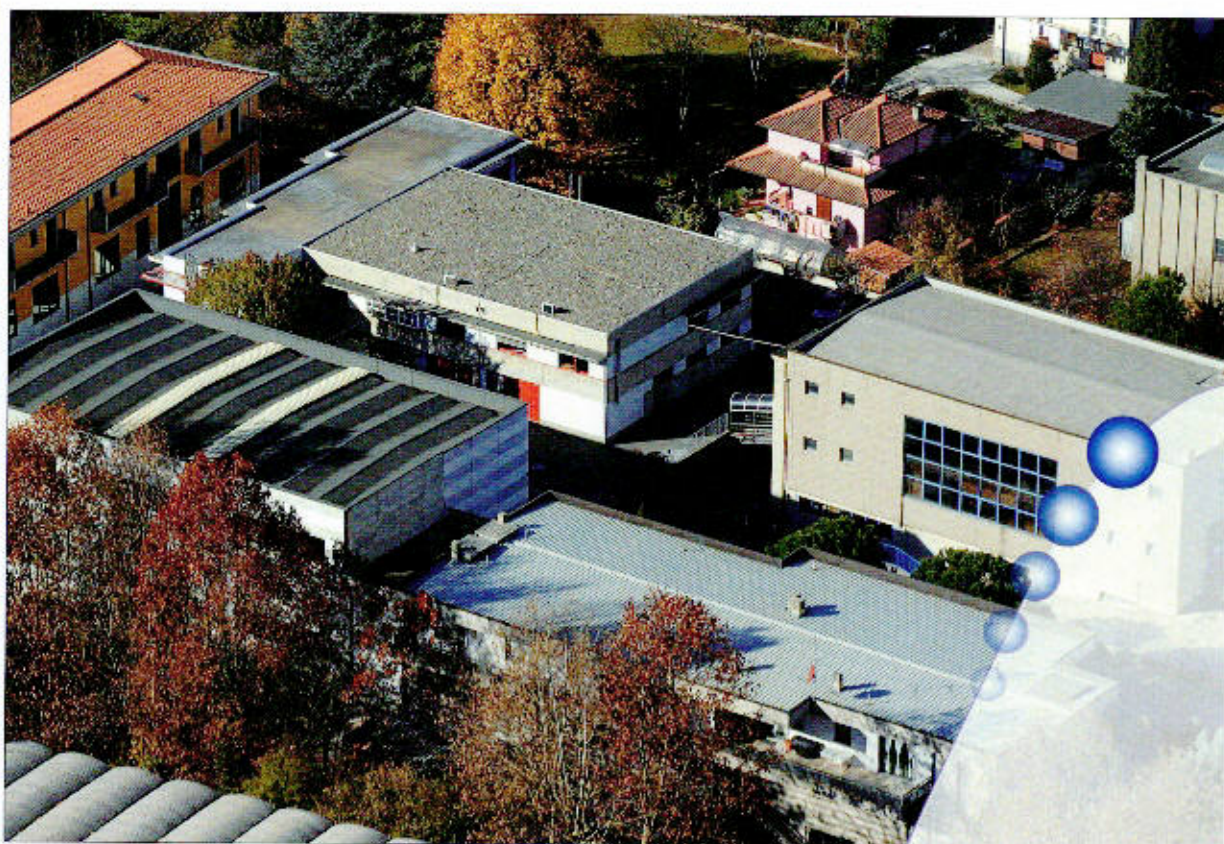
**OPTIKA MICROSCOPES ITALY**



we build our passion...



# OPTIKA MICROSCOPES WORLD



ITALIAN HEADQUARTERS

A team of 45 people works in our 13700 m<sup>3</sup> premises



# RESEARCH & DEVELOPMENT

OPTIKA LINEUP

# OPTIKA MICROSCOPES WORLD



## PRODUCTION



# OPTIKA MICROSCOPES WORLD



# ASSEMBLING

OPTIKA MICROSCOPES WORLD

# QUALITY CONTROL



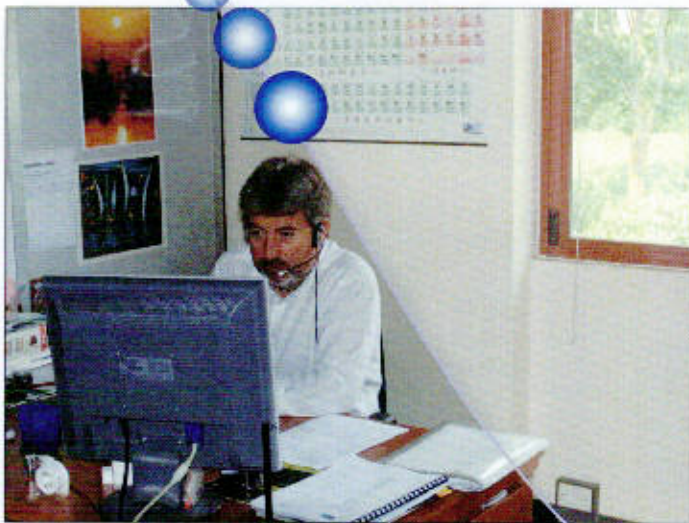
# DELIVERIES



# STOCK

# OPTIKA MICROSCOPES WORLD

## SHOWROOM



## SALES AND AFTER SALES



### SFC-3A Monocular microscope

Head: Monocular  
 Eyepiece: WF10X/18mm  
 Objectives: Achromatic 4x, 10x, 40x  
 Magnifications: 40x, 100x, 400x  
 Focusing system: Coarse  
 Stage: 100x90mm with sample clips  
 Condenser: Disc diaphragm  
 Illumination: 42mm dia. mirror



### SFC-3AF Monocular microscope

Head: Monocular  
 Eyepiece: WF10X/18mm  
 Objectives: Achromatic 4x, 10x, 40x  
 Magnifications: 40x, 100x, 400x  
 Focusing system: Coarse and fine  
 Stage: 120x110mm with sample clips  
 Condenser: Disc diaphragm  
 Illumination: 50mm dia. mirror



### BP-20/400 Monocular microscope

Head: Monocular, 45° inclined, 360° rotating  
 Eyepiece: WF10X/18mm  
 Objectives: Achromatic 4x, 10x, 40x  
 Magnifications: 40x, 100x, 400x  
 Focusing system: Coaxial coarse and fine  
 Stage: 120x110mm with sample clips  
 Condenser: Disc diaphragm  
 Illumination: 20W with tungsten bulb

### BP-20/600 Monocular microscope

Same than BP-20/400 but with 60x objective instead of 40x

BP-20/400hal Monocular microscope  
 Same than BP-20/400 but with low voltage 10W halogen bulb



### B-20 Monocular microscope

Head: Monocular, 45° inclined, 360° rotating  
 Eyepiece: WF10X/16mm  
 Objectives: Achromatic 4x, 10x, 40x  
 Magnifications: 40x, 100x, 400x  
 Focusing system: Coarse and fine  
 Stage: 90mm dia., 360° rotating, moving range 5mm, with sample clips  
 Condenser: Disc diaphragm  
 Illumination: 1W white LED, with intensity control



### M-100FL Monocular microscope

Head: Monocular, 45° inclined, 360° rotating  
 Eyepiece: WF10X/18mm  
 Objectives: Achromatic 4x, 10x, 40x  
 Magnifications: 40x, 100x, 400x  
 Focusing system: Coarse and fine  
 Stage: 120x110mm, with sample clips  
 Condenser: 0.65 N.A., with iris diaphragm  
 Illumination: 20W with tungsten bulb

### M-100FLed Monocular microscope

Same than M-100FL but LED illumination

### M-100FL-H Monocular microscope

Same than M-100FL but with low voltage 10W halogen bulb





## B-100 SERIES



### B-110 Monocular microscope

Head: Monocular 45° inclined, 360° rotating  
 Eyepiece: WF10X/18mm  
 Objectives: Achromatic DIN 4x, 10x, 40x  
 Stage: 125x130mm with sample clips  
 Focusing: Separate coarse and fine control knobs  
 Condenser: N.A. 0.65 with iris diaphragm  
 Illumination: 5W fluorescent tube



### B-120 Monocular microscope

As B-110 models with 100x objective and attached mechanical stage.  
 Condenser N.A. 1.25 with iris diaphragm



### B-125 Monocular microscope

Head: Monocular 45° inclined, 360° rotating  
 Eyepiece: WF10X/18mm  
 Objectives: Achromatic DIN 4x, 10x, 40x and 100x  
 Stage: 125x130mm 2-layer mechanical stage  
 Focusing: Coaxial coarse and fine control knobs  
 Condenser: N.A. 1.25 with iris diaphragm  
 Illumination: LED



### B-130 Binocular microscope

Head: Binocular 30° inclined, 360° rotating  
 Eyepiece: WF10X/18mm  
 Objectives: Achromatic DIN 4x, 10x, 40x and 100x  
 Stage: 125x130mm 2-layer mechanical stage  
 Focusing: Coaxial coarse and fine control knobs  
 Condenser: N.A. 1.25 with iris diaphragm  
 Illumination: 5W fluorescent tube

### B-126 Monocular microscope

As B-125 LED with rechargeable battery and 60x objective instead of 100x

### B-131 Binocular microscope

As B-130 with LED illuminator, rechargeable battery and 60x objective instead of 100x

## B-165 SERIES



### B-165 POL Polarising microscope

Head: Monocular 45° inclined, 360° rotating  
 Eyepiece: WF10X/18mm  
 Objectives: Achromatic DIN 4x, 10x, 40x

Rotating stage 360° diameter 120mm  
 Polarizer filter and analyzer filter

## B-180 SERIES

### B-181 Monocular microscope

Head: Monocular, 45° inclined, 360° rotating  
 Eyepiece: WF10X/18mm  
 Nosepiece: 4-positions  
 Objectives: Achromatic 4x, 10x, 40x, 100 (oil)  
 Magnifications: 40x, 100x, 400x, 1000x  
 Focusing system: Coaxial coarse and fine  
 Stage: Double layer with mechanical sliding stage, 125x115 mm, moving range 50x30 mm  
 Condenser: 1.25 N.A., with iris diaphragm, centrable and focusable  
 Illumination: 3W white LED with intensity control

### B-182 Binocular microscope

Binocular version of B-181, 30° inclined, 360° rotating

### B-183 Trinocular microscope

Trinocular version of B-181, 30° inclined, 360° rotating



# B-350 SERIES



## B-352A Binocular microscope

Head: Binocular, 30° inclined, 360° rotating  
 Eyepiece: WF10X/20mm  
 Nosepiece: 4-positions  
 Objectives: Achromatic 4x, 10x, 40x, 100 (oil)  
 Magnifications: 40x, 100x, 400x, 1000x  
 Focusing system: Coaxial coarse and fine  
 Stage: Double layer with mechanical sliding stage, 160x142 mm, moving range 76x52 mm  
 Condenser: 1.25 N.A., with iris diaphragm, centrable and focusable  
 Illumination: 3W white LED with intensity control

## B-353A Trinocular microscope

Trinocular version of B-352A

## B-352PL Binocular microscope

Head: Binocular, 30° inclined, 360° rotating  
 Eyepiece: WF10X/20mm  
 Nosepiece: 5-positions  
 Objectives: PLAN achromatic 4x, 10x, 40x, 100 (oil)  
 Magnifications: 40x, 100x, 400x, 1000x  
 Focusing system: Coaxial coarse and fine  
 Stage: Double layer with mechanical sliding stage, 160x142 mm, moving range 76x52 mm  
 Condenser: 1.25 N.A., with iris diaphragm, centrable and focusable  
 Illumination: 3W white LED with intensity control

## B-353PL Trinocular microscope

Trinocular version of B-352PL



## B-352PLi Binocular microscope

Head: Binocular, 30° inclined, 360° rotating  
 Eyepiece: WF10X/20mm  
 Nosepiece: 5-positions  
 Objectives: Infinity PLAN achromatic 4x, 10x, 40x, 100 (oil)  
 Magnifications: 40x, 100x, 400x, 1000x  
 Focusing system: Coaxial coarse and fine  
 Stage: Double layer with mechanical sliding stage, 160x142 mm, moving range 76x52 mm  
 Condenser: 1.25 N.A., with iris diaphragm, centrable and focusable  
 Illumination: 3W white LED with intensity control

## B-353PLi Trinocular microscope

Trinocular version of B352PLi

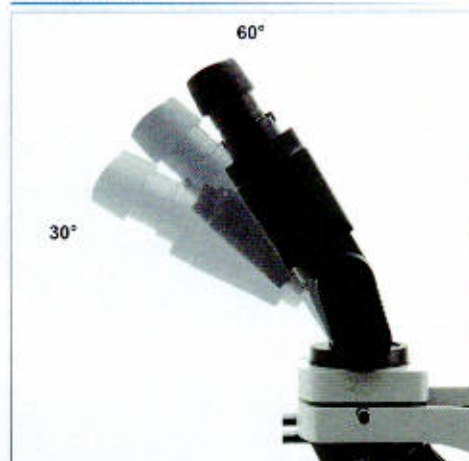
## B-352Ph Binocular phase contrast microscope

Head: Binocular, 30° inclined, 360° rotating  
 Eyepiece: WF10X/20mm  
 Nosepiece: 5-positions  
 Objectives: PLAN achromatic 4x, 10xPH, 40xPH, 100PH (oil)  
 Magnifications: 40x, 100x, 400x, 1000x  
 Focusing system: Coaxial coarse and fine  
 Stage: Double layer with mechanical sliding stage, 160x142 mm, moving range 76x52 mm  
 Condenser: 1.25 N.A., with iris diaphragm, centrable and focusable  
 Illumination: 3W white LED with intensity control

## B-353Ph Trinocular phase contrast microscope

Trinocular version of B-352Ph

# B-500 SERIES


**B-500 ERGO**

**B-500Bsp Binocular microscope**

Head: Binocular. 30° inclined, 360° rotating  
 Eyepiece: WF10X/22mm  
 Nosepiece: 5-positions  
 Objectives: Semi-Plan achromatic 4x, 10x, 40x, 100 (oil)  
 Magnifications: 40x, 100x, 400x, 1000x  
 Focusing system: Coaxial coarse and fine  
 Stage: Double layer with mechanical sliding stage, 175x145 mm, moving range 75x50 mm  
 Condenser: 1.25 N.A., with iris diaphragm, centrable and focusable  
 Illumination: 20W dichroic halogen bulb (equivalent to a normal 30W halogen bulb). Field diaphragm. Semi-Koehler system.

**B-500Tsp Trinocular microscope**

Trinocular version of B-500Bsp

**B-500Bpl Binocular microscope**

Same than B-500Bsp but with Plan objectives instead of Semi-Plan.

**B-500Tpl Trinocular microscope**

Trinocular version of B-500Bpl

**B-500Bph Binocular phase contrast microscope**

Same than B-500Bpl but with Phase Contrast Plan objectives 10x, 20x, 40x, 100x (oil) instead of Plan. 5-position Phase Contrast condenser.

**B-500Tph Trinocular phase contrast microscope**

Trinocular version of B-500Bph

**B-500FL Trinocular LED Fluorescence microscope**

Same than B-500Tpl, but with a special LED Fluorescence attachment for transmitted light.

**B-500ERGO ERGO Binocular Microscope**

Binocular microscope with ERGO head and plan achromatic objective 4x, 10x, 40x, 100x(oil) with LED illuminator (equivalent to 30W).

# B-600 SERIES



## B-600Bpl Binocular microscope

Head:	Binocular, 30° inclined, 360° rotating
Eyepiece:	WF 10X/22mm
Nosepiece:	5-positions
Objectives:	Plan achromatic 4x, 10x, 40x, 100 (oil)
Magnifications:	40x, 100x, 400x, 1000x
Focusing system:	Coaxial coarse and fine
Stage:	Double layer with mechanical sliding stage, 175x145 mm, moving range 75x55 mm
Condenser:	1.25 N.A., with iris diaphragm, centrable and focusable
Illumination:	External 50W with halogen bulb, fan-cooled case, centering system. Field diaphragm. Full Koehler system.

## B-600T Trinocular microscope

Trinocular version of B-600B

## B-600Bi Binocular microscope

Head:	Binocular, 30° inclined, 360° rotating
Eyepiece:	WF 10X/22mm
Nosepiece:	5-positions
Objectives:	Infinity Plan achromatic 4x, 10x, 20x, 40x, 100 (oil)
Magnifications:	40x, 100x, 200x, 400x, 1000x
Focusing system:	Coaxial coarse and fine
Stage:	Double layer with mechanical sliding stage, 175x145 mm, moving range 75x55 mm
Condenser:	1.25 N.A., with iris diaphragm, centrable and focusable
Illumination:	External 50W with halogen bulb, fan-cooled case, centering system. Field diaphragm. Full Koehler system.

## B-600Ti Trinocular microscope

Trinocular version of B-600Bi

## B-600TiFL Trinocular fluorescence microscope

Head:	Trinocular, 30° inclined, 360° rotating
Eyepiece:	WF 10X/22mm
Nosepiece:	5-positions
Objectives:	Infinity Plan FLUO 4x, 10x, 20x, 40x
Magnifications:	40x, 100x, 200x, 400x
Focusing system:	Coaxial coarse and fine
Stage:	Double layer with mechanical sliding stage, 175x145 mm, moving range 75x55 mm
Condenser:	1.25 N.A., with iris diaphragm, centrable and focusable
Illumination:	External 50W with halogen bulb, fan-cooled case, centering system. Field diaphragm. Full Koehler system.
Fluorescence attachment:	HBO100W illumination system. Equipped with Blue (FITC) and Green (TRITC) filtersets.



# B-600 SERIES



## **B-600Bph** Binocular phase contrast microscope

**Head:** Binocular, 30° inclined, 360° rotating  
**Eyepiece:** WF 10X/22mm  
**Nosepiece:** 5-positions  
**Objectives:** Phase Contrast Plan objectives 10x, 20x, 40x, 100x (oil)  
**Magnifications:** 100x, 200x, 400x, 1000x  
**Focusing system:** Coaxial coarse and fine  
**Stage:** Double layer with mechanical sliding stage. 175x145 mm, moving range 75x55 mm  
**Condenser:** 5-position phase contrast condenser  
**Illumination:** External 50W with halogen bulb, fan-cooled case, centering system. Field diaphragm. Full Koehler system.

## **B-600Tph** Trinocular phase contrast microscope

Trinocular version of B-600Bph

## **B-600Biph** Binocular phase contrast microscope

**Head:** Binocular, 30° inclined, 360° rotating  
**Eyepiece:** WF 10X/22mm  
**Nosepiece:** 5-positions  
**Objectives:** Infinity Phase Contrast Plan objectives 10x, 20x, 40x, 100x (oil)  
**Magnifications:** 100x, 200x, 400x, 1000x  
**Focusing system:** Coaxial coarse and fine  
**Stage:** Double layer with mechanical sliding stage. 175x145 mm, moving range 75x55 mm  
**Condenser:** 5-position phase contrast condenser  
**Illumination:** External 50W with halogen bulb, fan-cooled case, centering system. Field diaphragm. Full Koehler system.

## **B-600Tiph** Trinocular phase contrast microscope

Trinocular version of B-600Biph

# N-400 SERIES



## N-400FL Trinocular fluorescence microscope

Head:	Trinocular, 30° inclined, 360° rotating
Eyepiece:	WF10X/18mm
Nosepiece:	5-positions
Objectives:	FLUO 4x, 10x, 40x, 100x (Oil)
Magnifications:	40x, 100x, 400x, 1000x
Focusing system:	Coaxial coarse and fine
Stage:	Double layer with mechanical sliding stage, 140x132 mm, moving range 75x55 mm
Condenser:	1.25 N.A., with iris diaphragm, focusable
Illumination:	20W with halogen bulb. Field diaphragm. Semi-Koehler system.
Fluorescence attachment:	HBO100W illumination system. Equipped with Blue (FITC) and Green (TRITC) filtersets.



## N-400LD Trinocular fluorescence microscope

Head:	Trinocular, 30° inclined, 360° rotating
Eyepiece:	WF10X/18mm
Nosepiece:	5-positions
Objectives:	FLUO 4x, 10x, 40x, 100x (Oil)
Magnifications:	40x, 100x, 400x, 1000x
Focusing system:	Coaxial coarse and fine
Stage:	Double layer with mechanical sliding stage, 140x132 mm, moving range 75x55 mm
Condenser:	1.25 N.A., with iris diaphragm, focusable
Illumination:	3W white LED with intensity control. Field diaphragm. Semi-Koehler system.
Fluorescence attachment:	High-power LED fluorescence illumination system. Equipped with Blue (FITC) and Green (TRITC) filtersets.

## LED FLUORESCENCE



# N-400 SERIES



## N-400POL Trinocular polarising microscope

Head:	Trinocular, 30° inclined, 360° rotating
Eye-piece:	WF10X/18mm
Analiser:	Rotating filter with graduation 0°-90°
Bertrand lens:	Sliding in/out type with centering mechanism
Compensators:	1 slip (first class red), 1/4 I slip, quartz wedge
Nosepiece:	5-positions
Objectives:	POL 4x, 10x, 40x, 60x
Magnifications:	40x, 100x, 400x, 600x
Focusing system:	Coaxial coarse and fine
Stage:	Diameter 145 mm, 360° rotating and graduated (1° division). Minimum resolution 6' when using vernier scale
Condenser:	1.25 N.A., with iris diaphragm, focusable
Polariser:	Sliding in/out filter, located on the top of the illuminator
Illumination:	20W with halogen bulb. Field diaphragm. Semi-Koehler system



## XDS SERIES

**XDS-1R Trinocular inverted microscope**

Head: Trinocular, 30° inclined, 360° rotating  
 Eyepiece: WF10X/20mm  
 Nosepiece: 4-positions  
 Objectives: Plan achromatic LWD 10x, PH10x, 20x, 40x  
 Magnifications: 100x, 200x, 400x  
 Focusing system: Coaxial coarse and fine  
 Stage: 200 x 152 mm. Double layer translator with coaxial controls. X-Y translation: 77 x 37 mm. Interchangeable metallic inserts for specimen slides and various sizes of Petri dishes  
 Condenser: Long working distance condenser, numerical aperture 0.40. Iris aperture diaphragm, filter and phase ring holder. Adjustable height, centrable  
 Illumination: 20W halogen illuminator, with adjustable intensity, condenser and field diaphragm

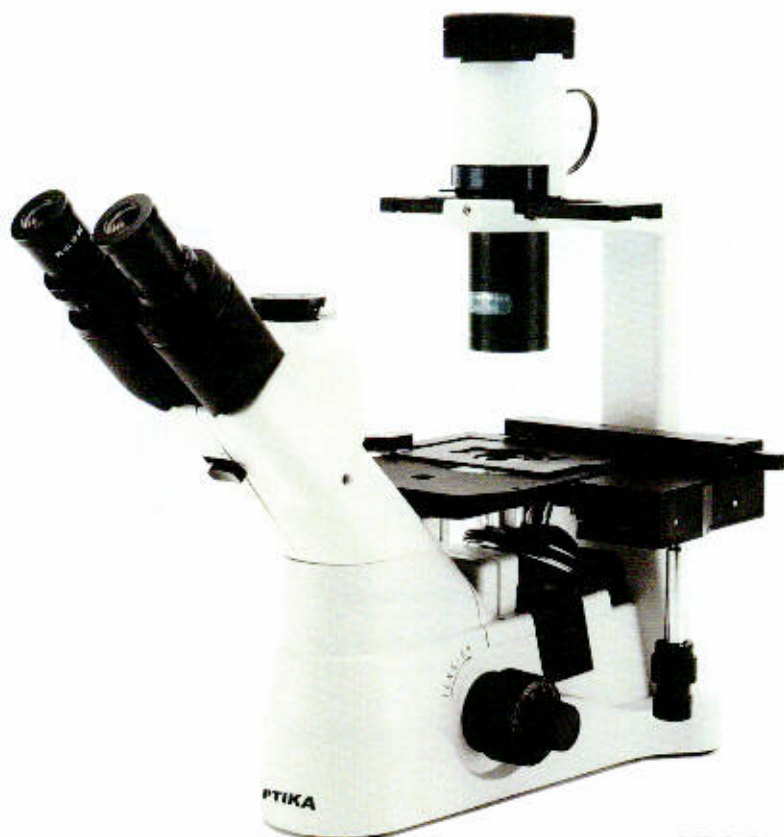
**XDS-2 Trinocular inverted microscope**

Head: Trinocular, 30° inclined, 360° rotating  
 Eyepiece: WF10X/22mm  
 Nosepiece: 5-positions  
 Objectives: Infinity Plan achromatic LWD 4x, PH10x, PH20x, 40x  
 Magnifications: 40x, 100x, 200x, 400x  
 Focusing system: Coaxial coarse and fine  
 Stage: 250 x 230 mm. Translator with lowered ergonomic coaxial controls. X-Y translation: 119 x 70 mm. Interchangeable metallic inserts for specimen slides, dishes and flasks  
 Condenser: Long working distance condenser, numerical aperture 0.30, working distance 72 mm. The condenser can be removed in order to increase the working distance to 150 mm  
 Illumination: 30W halogen illuminator, with adjustable intensity and field diaphragm

**XDS2 with fluorescence attachment**



## XDS SERIES

**XDS-3 Trinocular inverted microscope**

Head:	Trinocular, 45° inclined
Eyeiece:	WF10X/22mm
Nosepiece:	5-positions
Objectives:	Infinity Plan achromatic LWD PH10x, PH20x, PH40x
Magnifications:	100x, 200x, 400x
Focusing system:	Coaxial coarse and fine
Stage:	250 x 230 mm. Translator with lowered ergonomic coaxial controls. X-Y translation: 114 x 81 mm. Interchangeable metallic inserts for specimen slides, dishes and flasks
Petri dishes and flasks:	
Condenser:	Long working distance condenser, numerical aperture 0.30, working distance 72 mm. The condenser can be removed in order to increase the working distance to 150 mm
Illumination:	30W halogen illuminator, with adjustable intensity and field diaphragm

**XDS-3LT Trinocular inverted microscope**

Budget version of XDS-3.  
Same technical features, but delivered without aluminium case and mechanical stage.



## STEREO SERIES



**MS-2 Monoscope**  
 Head: Monocular, 45° inclined,  
 360° rotating  
 Eyepiece: WF10X/18mm  
 Objective: 2x  
 Magnification: 20x



**S-20-L Stereomicroscope**  
 Head: Binocular, 45° inclined (rear)  
 Eyepieces: WF10X/20mm  
 Objective: 2x  
 Magnification: 20x  
 Illumination: Incident 10W, tungsten bulb

**S-10-P Stereomicroscope**

Head: Binocular, vertical  
 Eyepieces: WF10X/20mm  
 Objective: 2x  
 Magnification: 20x



**S-20-2L Stereomicroscope**

Head: Binocular, 45° inclined (rear)  
 Eyepieces: WF10X/20mm  
 Objective: 2x  
 Magnification: 20x  
 Illumination: Incident and transmitted 10W,  
 tungsten bulbs



**S-10-L Stereomicroscope**  
 Head: Binocular, vertical  
 Eyepieces: WF10X/20mm  
 Objective: 2x  
 Magnification: 20x  
 Illumination: Incident 10W, tungsten bulb

**S-10-2L Stereomicroscope**

Head: Binocular, vertical  
 Eyepieces: WF10X/20mm  
 Objective: 2x  
 Magnification: 20x  
 Illumination: Incident and transmitted 10W,  
 tungsten bulbs



**ST-30B-2L Stereomicroscope**  
 Head: Binocular, 45° inclined (rear)  
 Eyepieces: WF10X/20mm  
 Objective: 1x/3x  
 Magnification: 10x/30x  
 Illumination: Incident and transmitted 10W,  
 tungsten bulbs

# STEREO SERIES



**ST-30-LR Stereomicroscope**

Head: Binocular, 45° inclined (rear)  
 Eyepieces: WF10X/20mm  
 Objective: 2x/4x  
 Magnification: 20x/40x  
 Illumination: Incident and transmitted 10W, tungsten bulbs



**S-30-2LF Stereomicroscope**

Head: Binocular, 45° inclined (front)  
 Eyepieces: WF10X/20mm  
 Objective: 2x/4x  
 Magnification: 20x/40x  
 Illumination: Incident and transmitted 10W, tungsten bulbs



**S-30-2Led Stereomicroscope**

Head: Binocular, 45° inclined (front)  
 Eyepieces: WF10X/20mm  
 Objective: 2x/4x  
 Magnification: 20x/40x  
 Illumination: Incident and transmitted, LED



**S-40-2L Stereomicroscope**

Head: Binocular, 45° inclined, 360° rotating  
 Eyepieces: WF10X/20mm  
 Objective: 2x/4x  
 Magnification: 20x/40x  
 Illumination: Incident and transmitted 10W, halogen bulbs



**S-45-2L Stereomicroscope**

Head: Binocular, 45° inclined, 360° rotating  
 Eyepieces: WF10X/20mm  
 Objective: 2x/4x  
 Magnification: 20x/40x  
 Illumination: Incident and transmitted 10W, halogen bulbs, with intensity control



**ST-50 Stereomicroscope**

Head: Binocular, 45° inclined (front)  
 Eyepieces: WF10X/20mm  
 Objective: LWD 2x  
 Magnification: 20x  
 Illumination: Incident 10W, halogen bulb



**ST-50LED Stereomicroscope**

Head: Binocular, 45° inclined (front)  
 Eyepieces: WF10X/20mm  
 Objective: LWD 2x  
 Magnification: 20x  
 Illumination: LED illumination with flexible arm



### LAB 1 Stereomicroscope

Head: Binocular, 45° inclined,  
360° rotating  
Eyepieces: WF10X/20mm  
Objective: 2x/4x, 95 mm working distance  
Magnification: 20x/40x  
Illumination: Incident and transmitted 10W,  
halogen bulbs, with intensity control



### LAB 2 Stereozoom microscope

Head: Binocular, 45° inclined,  
360° rotating  
Eyepieces: WF10X/20mm  
Objective: Zoom 1x...4x, 95 mm working distance  
Magnification: 10x...40x  
Illumination: Incident and transmitted 10W, halogen  
bulbs, with intensity control

## SZM SERIES

**SZM-1 Stereozoom microscope**

Head: Binocular, 45° inclined, 360° rotating  
 Eyepieces: WF10X/20mm, high-point  
 Objective: Zoom 0,7x...4,5x, 100 mm working distance  
 Magnification: 7x...45x  
 Illumination: Incident and transmitted 15W, halogen bulbs, with intensity control

**SZM-2 Stereozoom microscope**

Trinocular version of SZM-1

**SZM-3 Stereozoom microscope**

Head: Binocular, 45° inclined, 360° rotating  
 Eyepieces: WF10X/20mm, high-point  
 Objective: Zoom 0,7x...4,5x, 95 mm working distance  
 Magnification: 7x...45x  
 Stand: universal overhanging stand

**SZM-4 Stereozoom microscope**

Trinocular version of SZM-3

**SZM-SMD Stereozoom microscope**

Same than SZM-4 but with oblique viewing attachment for SMD inspection

**SZR SERIES**

**SZR-2**



**SZR-6**



**SZR-10**



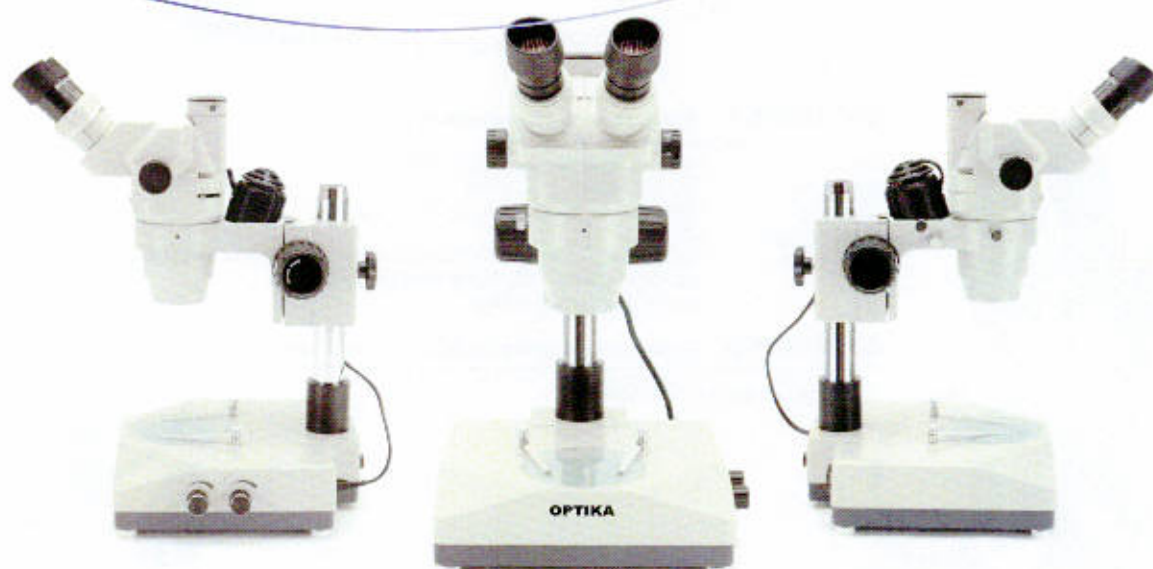
**SZR-12**



## SZR SERIES



SZR-14



	Head	Eyeieces	Objective	Stand	Illuminator(s)
SZR-1	Binocular	EWf10x/22	0,67...4,5x	Simple	-----
SZR-2	Trinocular	EWf10x/22	0,67...4,5x	Simple	-----
SZR-3	Binocular	EWf10x/22	0,67...4,5x	Simple	Incident halogen 12V/15W, external transformer
SZR-4	Trinocular	EWf10x/22	0,67...4,5x	Simple	Incident halogen 12V/15W, external transformer
SZR-5	Binocular	EWf10x/22	0,67...4,5x	Trans-illuminator base	Incid. or transm., halogen 12V/15W, ext. tran-
SZR-6	Trinocular	EWf10x/22	0,67...4,5x	Trans-illuminator base	Incid. or transm., halogen 12V/15W, ext. tran-
SZR-7	Binocular	EWf10x/22	0,67...4,5x	Trans-illuminator base	Incid. and transm., halogen 12V/15W, ext. tran-
SZR-8	Trinocular	EWf10x/22	0,67...4,5x	Trans-illuminator base	Incid. and transm., halogen 12V/15W, ext. tran-
SZR-9	Binocular	EWf10x/22	0,67...4,5x	Pillar, base with illuminators	Incid. and transm., halogen 12V/15W, int. tran-
SZR-10	Trinocular	EWf10x/22	0,67...4,5x	Pillar, base with illuminators	Incid. and transm., halogen 12V/15W, int. tran-
SZR-11	Binocular	EWf10x/22	0,67...4,5x	Simple overhanging	-----
SZR-12	Trinocular	EWf10x/22	0,67...4,5x	Simple overhanging	-----
SZR-13	Binocular	EWf10x/22	0,67...4,5x	Hinged overhanging	-----
SZR-14	Trinocular	EWf10x/22	0,67...4,5x	Hinged overhanging	-----

# GEMOLOGICAL SERIES

## SZM-GEM-1 Stereozoom gemological microscope

Head: Binocular, 45°inclined, 360° rotating  
 Eyepieces: WF10X/20mm, high-point  
 Objective: Zoom 0,7x...4,5x, 95 mm working distance  
 Magnification: 7x...45x  
 Illumination: transmitted: special LED illuminator for darkfield and bright field  
 Incident: 15W, halogen bulb both with intensity control

## SZM-GEM-2 Stereozoom gemological microscope

Trinocular version of SZM-GEM-1



## OPTIGEM-1 Stereozoom gemological microscope

Head: Binocular, 45°inclined, 360° rotating  
 Eyepieces: WF10X/20mm, high-point  
 Objective: Zoom 0,7x...4,5x, 95 mm working distance  
 Magnification: 7x...45x  
 Illumination: transmitted: special LED illuminator for darkfield and brightfield  
 Incident: special LED illuminator on flexible arm both with intensity control

## OPTIGEM-2 Stereozoom gemological microscope

Trinocular version of OPTIGEM-1





# CL SERIES - ILLUMINATION SYSTEMS

## CL-01 Cold light generator

100W cold light generator, high efficiency 12V halogen dichroic lamp. Brightness adjustment on remote control panel. Power supply 230V.



## CL-11 Double-arm optic fiber guide

Length 500 mm, diameter 13 mm. Fitted with two fixed condensers (lenses) at the ends of the arms.



## CL-12 Ring optic fiber guide

Length 700 mm, diameter 16 mm. The circular end is suitable for SZM and SZR series, by using the three locking screws. Diameter of the diameter fixing ring 55mm.



## CL-15.1 Ring led illumination

LED ring light illuminator. Suitable for SZM and SZR series. Power supply 230V. Intensity light control. Diameter of the diameter fixing ring 60mm.



## CL-20 Ring light illuminator

Fluorescence ring light illuminator, 8W. Suitable for SZM and SZR series. Power supply 230V. Diameter of the diameter fixing ring 60mm.



## CL-30 2-arm LED illuminator

With 3W high efficiency LED. Without Brightness control.

## CL-31 2-arm LED illuminator

With 3W high efficiency LED. With Brightness control.



**DIGITAL PHOTO & VIDEO CAMERAS**

**OPTIKAM 2 Digital USB camera**

480Kpixels; with built-in optical adapter

**OPTIKAM 3 Digital USB camera**

1,3Mpixels; with built-in optical adapter

**OPTIKAM 3C Digital USB camera**

1,3Mpixels; with C-mount and optical adapter



**OPTIKAM Pro3 Digital USB camera**

3,2Mpixels; with C-mount and optical adapter

**OPTIKAM Pro5 Digital USB camera**

5Mpixels; with C-mount and optical adapter



**DIGI Digital camera kits**

Up to 10Mpixels; with universal optical adapter



**EDUCAM Flexible CCD colour video cameras**



**VC SERIES CCD colour video cameras**



# DIGITAL MICROSCOPES

## DM-5 Monocular digital microscope

**0,48Mpixels**

Head: Digital, Monocular, 360° rotating, 45° inclined  
 Eyepiece: WF10X/16mm  
 Nosepiece: Triple  
 Objectives: Achromatic 4x, 10x, 40x  
 Stage: Rotating round stage dia. 90mm; moving range: 5mm; slide clips  
 Focusing system: Coarse and fine with different axis  
 Illumination: White LED, non-rechargeable, with brightness control  
 Digital camera resolution: 800x600pixels, 480K  
 Output: USB port  
 Software: OPMIAS (Optika Micro Image Analysys Software)



## DM-10 Monocular digital microscope

**0,48Mpixels**

Head: Digital, Monocular, 360° rotating, 45° inclined  
 Eyepiece: WF10X/18mm  
 Nosepiece: Quadruple, reversed  
 Objectives: Achromatic 4x, 10x, 40x  
 Stage: Double layer with mechanical sliding stage, 125x115mm, mov. range 50x30mm  
 Condenser: 1.25 N.A. Abbe type  
 Focusing system: Coaxial coarse and fine, with focusing stop mechanism  
 Illumination: White LED, non-rechargeable, with brightness control  
 Digital camera resolution: 800x600pixels, 480K  
 Output: USB port  
 Software: OPMIAS (Optika Micro Image Analysys Software)



## DM-15 Binocular digital microscope

**2,0Mpixels**

Head: Digital, Binocular, 360° rotating, 30° inclined  
 Eyepieces: WF10X/20mm  
 Nosepiece: Quadruple, reversed  
 Objectives: Achromatic 4x, 10x, 40x, 100x (oil immersion)  
 Stage: Double layer with mechanical sliding stage, 160x142mm, mov. range 76x52mm  
 Condenser: 1.25 N.A. Abbe type, with centring system  
 Focusing system: Coarse and fine with different axis, with focusing stop mechanism  
 Illumination: White LED, non-rechargeable, with brightness control  
 Digital camera resolution: 1600x1200pixels, 2.0M  
 Output: USB 2.0 port  
 Software: OPMIAS (Optika Micro Image Analysys Software)



## DM-20 Binocular digital microscope

**3,2Mpixels**

Head: Digital, Binocular, 360° rotating, 30° inclined  
 Eyepieces: WF10X/20mm  
 Nosepiece: Quadruple, reversed  
 Objectives: Plan achromatic 4x, 10x, 40x, 100x (oil immersion)  
 Stage: Double layer with mechanical sliding stage, 160x142mm, mov. range 76x52mm  
 Condenser: 1.25 N.A. Abbe type, with centring system  
 Focusing system: Coarse and fine with different axis, with focusing stop mechanism  
 Illumination: White LED, non-rechargeable, with brightness control  
 Digital camera resolution: 2048x1536pixels, 3.2M  
 Output: USB 2.0 port

# OPTIKA VISION® SOFTWARE PACKAGE

Optika Vision is a software family included with our Optikam series. There are two versions: Lite and Pro, designed to satisfy the needs for both the beginner and the advanced user.

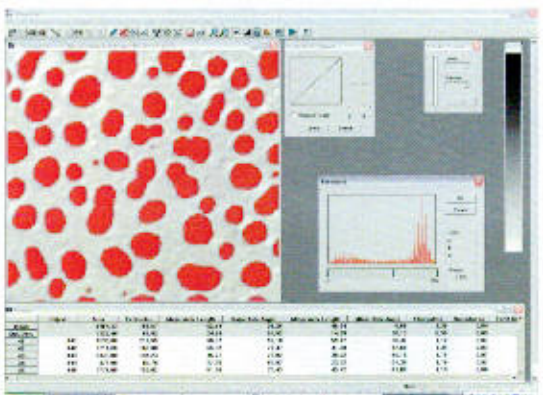
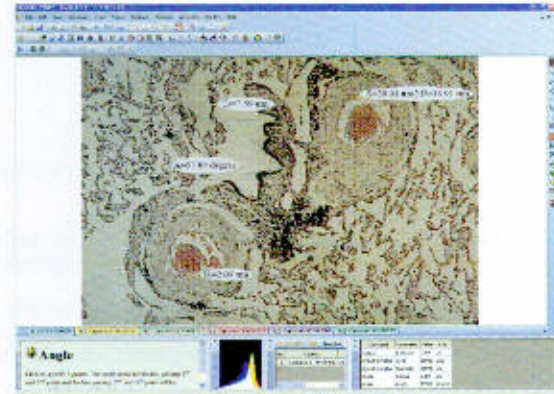
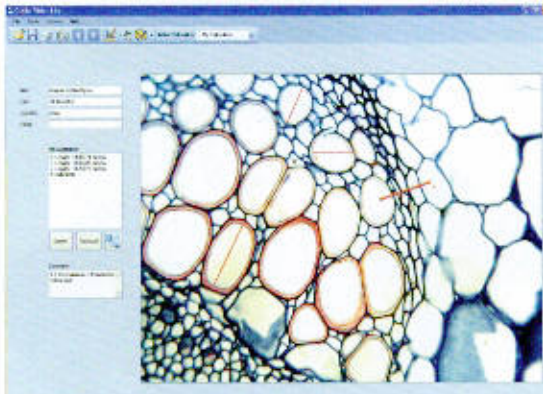
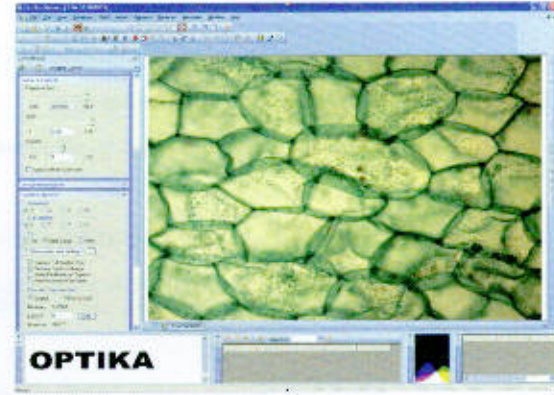
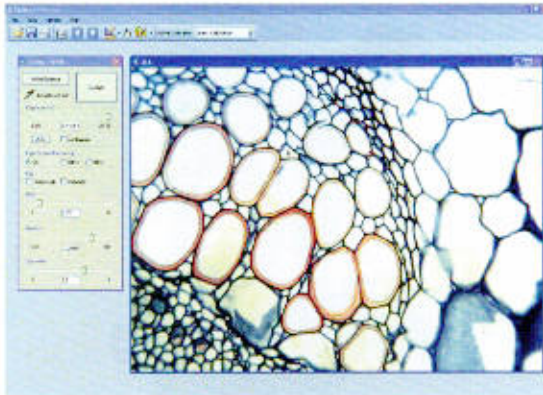
Optika Vision Lite is provided for all the Optikams and especially recommended to use with the cameras Optikam 2, 3 and 3C. It can be used for reporting and linear measurements.

Optika Vision Pro is included exclusively with the Optikam Pro series for professional image acquisition and analysis.

A freeware bundle is supplied as bonus for additional user experience.

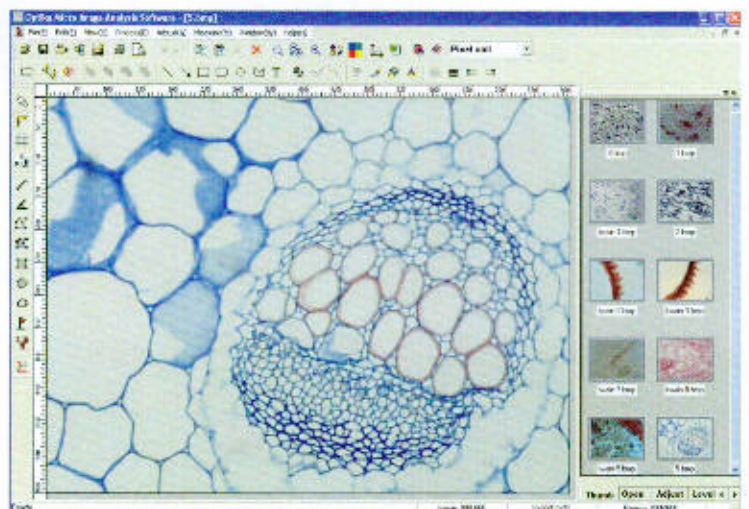
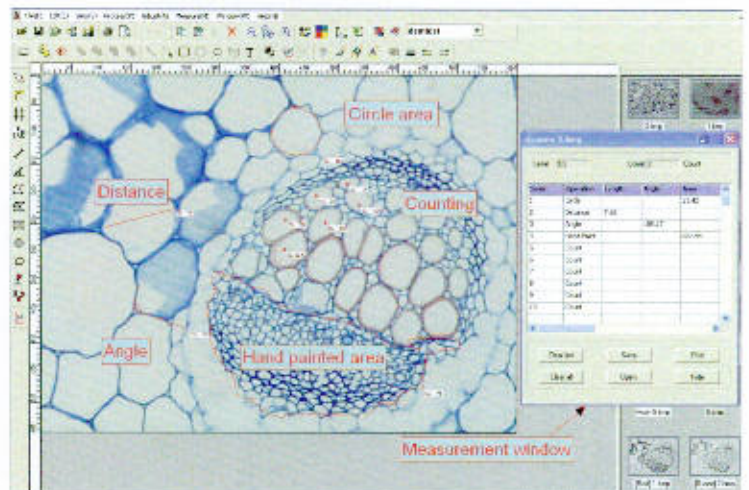
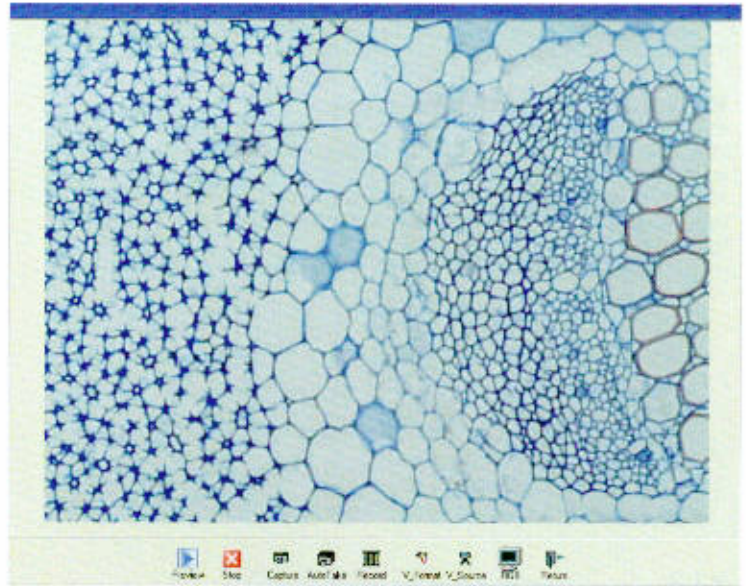
Including:

- Optika Vision Lite
- Optika Vision Pro
- AMCap
- Gimp
- Combine Z5
- Image Tool
- MBF Image J



# OPMIAS® IMAGE ANALYSIS SOFTWARE

OPMIAS (OPTIKA Micro Image Analysis Software) is especially developed for Optika digital microscopes series, DM. It contains powerful tools for image capturing, adjusting, operating and measuring. OPMIAS can be used in many different fields, such as biology, medicine, education, mechanics, electronics and chemistry.



# INDUSTRIAL MICROSCOPES

## XC-100L Portable microscope

Fitted with WF10x/17mm micrometric eyepiece with cross divided into tenths of a millimetre.  
10x achromatic objective (total magnification 100); focusing controlled by a rack and pinion mechanism; adjustable battery powered penlight lighting unit.



## XZ-1 Industrial zoom monoscope

Bench microscope for measuring and viewing surfaces with a zoom objective.  
Fitted with WF10x/18mm micrometric eyepiece with cross divided into tenths of a millimetre. 0.7x...4.5x achromatic zoom. Objective (max. magnification 45).  
Focusing controlled by a rack and pinion mechanism.  
Double lighting unit for incident and transmitted light fitted with low voltage halogen bulbs (12V/10W).  
Working distance 90 mm.



## IMM-1 Trinocular inverted metallurgical microscope

Head: Trinocular, 45° inclined, 360° rotating  
Eyepiece: WF10X/20mm  
Nosepiece: 5-positions  
Objectives: Infinity Plan achromatic LWD 4x, 10x, 20x, 40x  
Magnifications: 40x, 100x, 200x, 400x  
Focusing system: Coaxial coarse and fine  
Stage: 250 x 230 mm. Translator with lowered ergonomic coaxial controls. X-Y translation: 119 x 70 mm. Interchangeable metallic inserts for specimen slides, dishes and flasks  
Petri  
Filters: Polariser, analyser, blue, green, yellow  
Illumination: 30W halogen illuminator, with adjustable intensity, condenser and field diaphragm



CATALOGUE

<p><b>OPTIKA</b></p>  <p><b>ECOVISION SERIES</b></p> <p>Biological microscopes</p>	<p><b>OPTIKA</b></p>  <p><b>B-100 SERIES</b></p> <p>Educational biological microscopes</p>	<p><b>OPTIKA</b></p>  <p><b>B-180 SERIES</b></p> <p>Microscope 1000x</p>	<p><b>OPTIKA</b></p>  <p><b>B-350 SERIES</b></p> <p>Biological microscopes</p>
<p><b>OPTIKA</b></p>  <p><b>N-400 SERIES</b></p> <p>Special microscope Microscopio especial</p>	<p><b>OPTIKA</b></p>  <p><b>B-500 SERIES</b></p> <p>New</p>	<p><b>OPTIKA</b></p>  <p><b>B-600 SERIES</b></p>	<p><b>OPTIKA</b></p>  <p><b>XOS SERIES</b></p> <p>Inverted biological microscopes Microscopios biológicos invertidos</p>
<p><b>OPTIKA</b></p>  <p><b>INDUSTRY SERIES</b></p> <p>The Industry Series</p>	<p><b>OPTIKA</b></p>  <p><b>STEREO SERIES</b></p> <p>Educational stereomicroscopes Microscopios estereoscópicos</p>	<p><b>OPTIKA</b></p>  <p><b>LAS SERIES</b></p> <p>Stereomicroscope professional Microscopio estereoscópico profesional Estereomicroscopios profesionales</p>	<p><b>OPTIKA</b></p>  <p><b>SZM SERIES</b></p> <p>Stereomicroscopes for the laboratory</p>
<p><b>OPTIKA</b></p>  <p><b>SZR SERIES</b></p> <p>Stereomicroscope for Research Estereomicroscopios para investigación</p>	<p><b>OPTIKA</b></p>  <p><b>OPTIGEM</b></p> <p>2-in-one gemological stereozoom microscope</p>	<p><b>OPTIKA</b></p>  <p><b>DIGITAL PHOTO AND VIDEO SOLUTIONS FOR MICROSCOPY</b></p> <p>Enjoy the digital experience</p>	<p><b>OPTIKA</b></p>  <p><b>DIGITAL MICROSCOPES</b></p> <p>Enjoy the digital experience</p>

TECHNICAL CATALOGUE

ON REQUEST

ASK FOR YOUR COPIES!

# OPTIKA

M I C R O S C O P E S

I T A L Y



**PRODI**

**Prodi Oy**

Valakkatie 2 - 00780 Helsinki

Puh. 0207 439 439 - Fax. 0207 439 430

prodi@prodi.fi - www.prodi.fi